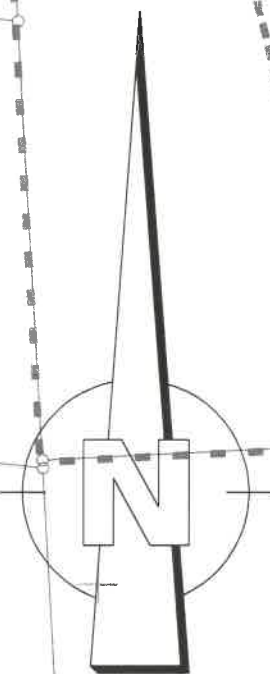


Abrundungssatzung

**Abrundungs-
satzung**

MI	Z = I bzw. Z = II bei PD
0,4	-/-
SD: DN 25°-35° PD: DN 20°-25°	0



165/6
5349700

165/5

5349650

165/4

165/3

5349600

/15

166/2

166/1

Brühlstraße

Stegstraße

2583

2567/1

2567/2

256

2579

2580

2581

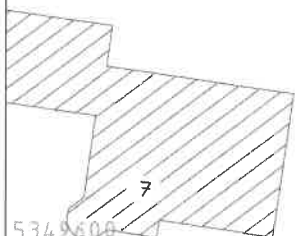
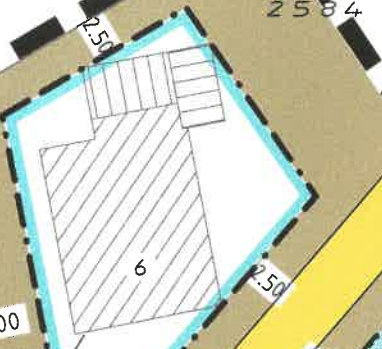
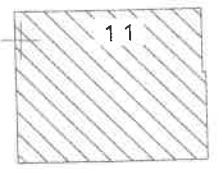
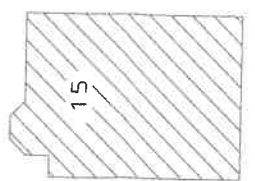
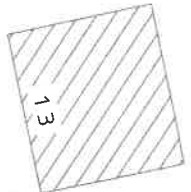
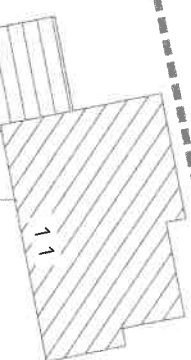
2585

2586/3

2586/1

2591

2874



5.00

2.50

2.50

2.50

2587/1

5.00

5.00

4.50

3.00

6.00